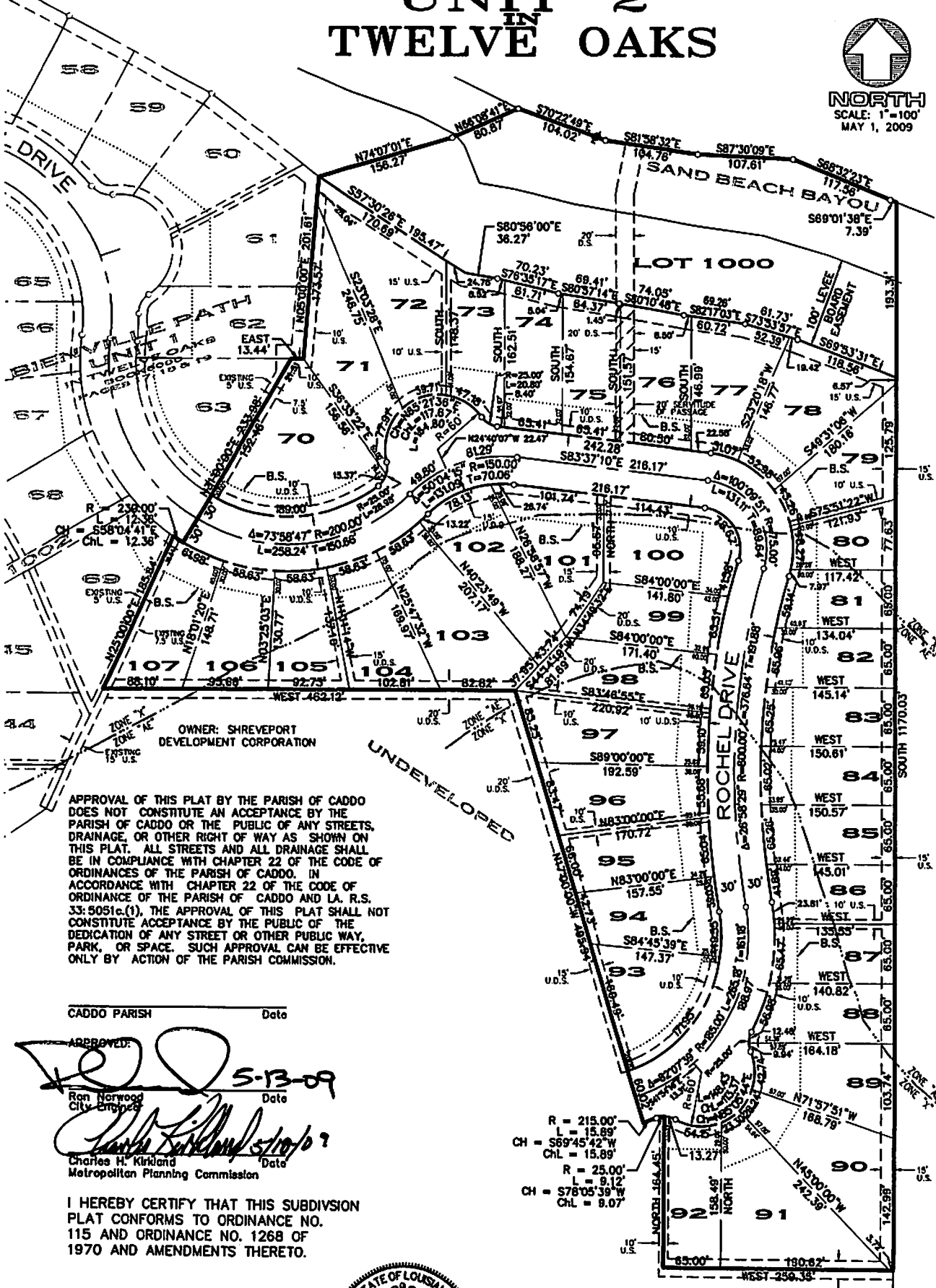


WOOD/224

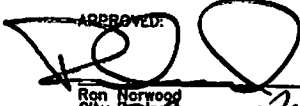
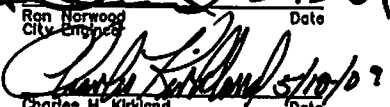
BIENVILLE PATH UNIT 2 IN TWELVE OAKS




OWNER: SHREVEPORT DEVELOPMENT CORPORATION

APPROVAL OF THIS PLAT BY THE PARISH OF CADDO DOES NOT CONSTITUTE AN ACCEPTANCE BY THE PARISH OF CADDO OR THE PUBLIC OF ANY STREETS, DRAINAGE, OR OTHER RIGHT OF WAY AS SHOWN ON THIS PLAT. ALL STREETS AND ALL DRAINAGE SHALL BE IN COMPLIANCE WITH CHAPTER 22 OF THE CODE OF ORDINANCES OF THE PARISH OF CADDO. IN ACCORDANCE WITH CHAPTER 22 OF THE CODE OF ORDINANCE OF THE PARISH OF CADDO AND LA. R.S. 33:5051c.(1), THE APPROVAL OF THIS PLAT SHALL NOT CONSTITUTE ACCEPTANCE BY THE PUBLIC OF THE DEDICATION OF ANY STREET OR OTHER PUBLIC WAY, PARK, OR SPACE. SUCH APPROVAL CAN BE EFFECTIVE ONLY BY ACTION OF THE PARISH COMMISSION.

CADDO PARISH Date

APPROVED:  5-13-09
Ron Norwood Date
City Engineer
 5/10/09
Charles H. Kirkland Date
Metropolitan Planning Commission

I HEREBY CERTIFY THAT THIS SUBDIVISION PLAT CONFORMS TO ORDINANCE NO. 115 AND ORDINANCE NO. 1268 OF 1970 AND AMENDMENTS THERETO.

 5-4-09
MOHR AND ASSOCIATES, INC. Date
Johnnie A. Craig
Registered Professional Land Surveyor
Registration No. 45R7



R = 215.00'
L = 15.89'
CH = S69°45'42" W
ChL = 15.89'
R = 25.00'
L = 9.12'
CH = S78°05'39" W
ChL = 8.07'